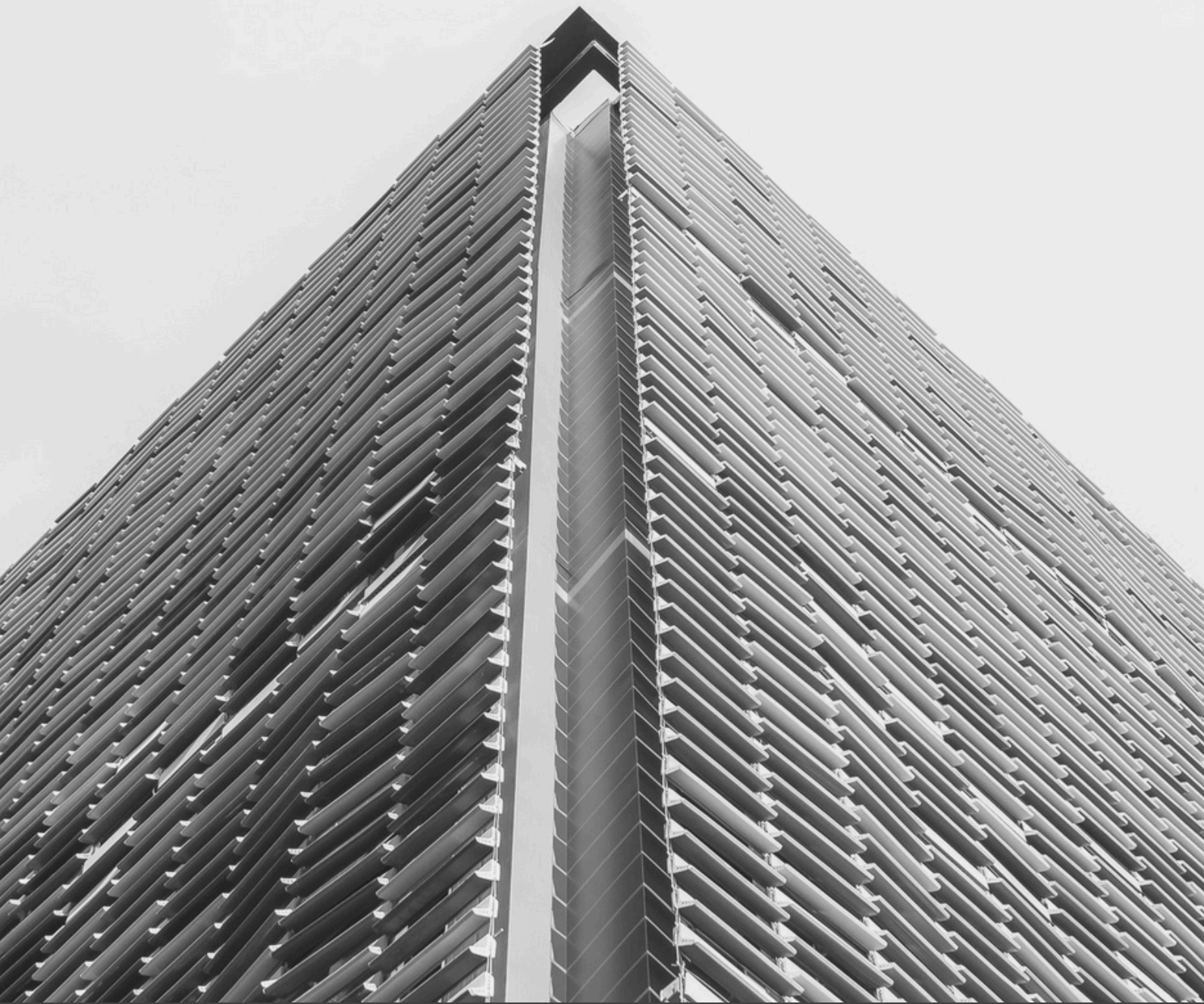


# THE SPECIFIER HANDBOOK

---

A handbook on the basic concepts of Faveker®  
ventilated façade.



**FAVEKER®**

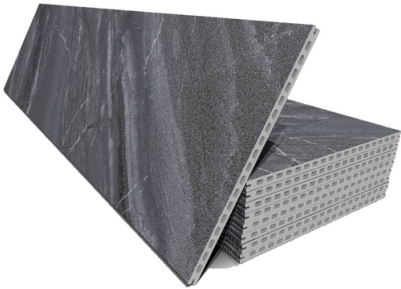
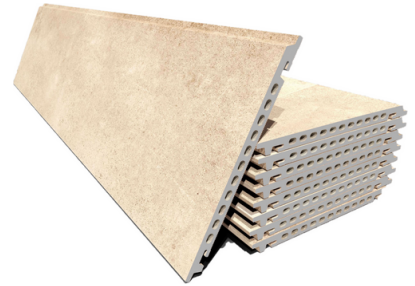
ARCHITECTURAL CERAMICS

# CERAMIC

## GA16

Light, accessible-after-installation and very versatile panel with horizontal joint overlap to protect against the entry of moisture and water and to get the almost full sealing of the chamber.

---



## GA20

Tile with 4 rectified sides to favour balanced aesthetics of the building and ready for vertical installation.

---

## GA30

Ceramic panel designed for those projects that require special resistance thanks to its 30 mm. thickness.

---



# EFFICIENCY AND SUSTAINABILITY

0

production with zero residual water discharge and control of water footprint

30

30% reduction of CO2 emissions in the production processes in comparison with conventional ones

45

52% of recycled content

50

it allows buildings with energy efficiency: 50% reduction in primary energy demand

100

sustainable solution 100% recyclable at the end of its useful life



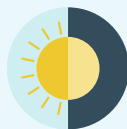
Tiles produced under eco-design criteria

## HEALTHY SOLUTION

The tiles include Bioklinker® technology, which inhibits the growth of bacteria and fungi, resulting in a product highly efficient against odor and stains.



Antibacterial: reduction of 99% of the bacteria



Active day and night



Continued effectiveness throughout the useful life of the product



Maintenance free



It prevents the appearance of fungi, lichens and moss



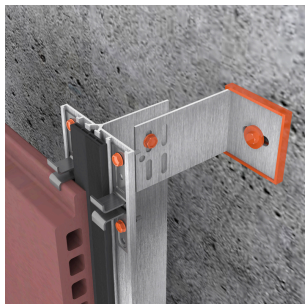
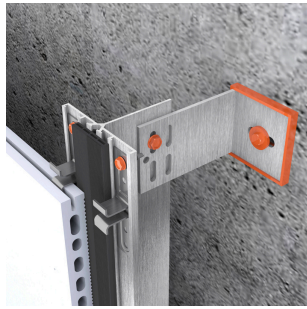
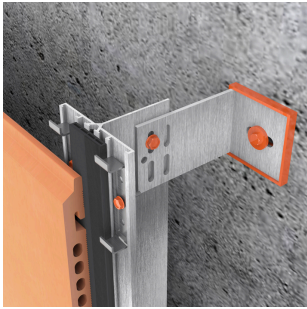
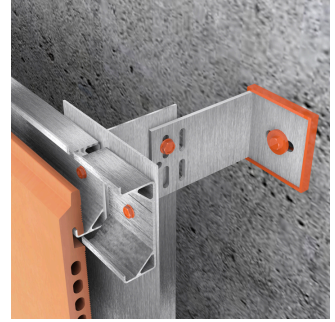
Effective against odor and stains



# SYSTEMS

## FTS502 A

Hidden fixing system with horizontal profiles that absorbs vibrations by means of spring clips or polymer resin. Available in aluminium or stainless steel. It allows designs of façade that break up the vertical linearity. It is compatible with GA16, ideal for rehabilitations and buildings with small-size tiles. Horizontal profiles are installed on vertical profiles which are fixed on brackets.



## FTS502 B

Fixing system with vertical profiles made of vertical and horizontal load brackets, simple and double stainless-steel clips and connecting elements. The continuous vertical joint includes an EPDM profile to avoid the entry of water and vibrations.

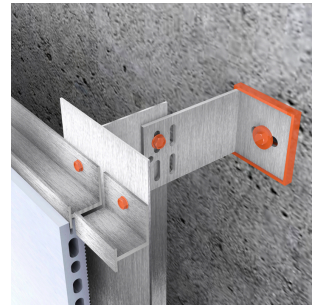
The brackets are designed to be adapted to different air chamber thickness.

It allows lengths up to 1200 mm between vertical profiles and is compatible with GA16, GA20, GA30 and GAV.

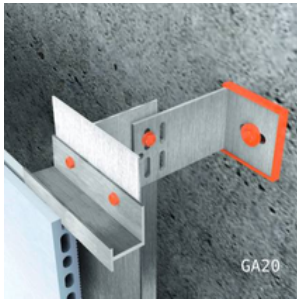


## FTS506

Hidden fixing system composed of retention and support brackets with horizontal battens that allow the installation of Faveker® pieces with staggered joints. Vertical profiles are fixed onto the brackets, and the horizontal profiles are placed on top of these. The tolerance adjustment between the Faveker® ceramic and the horizontal profile is made using polyurethane resin polymeric sealant. Compatible with GA20.



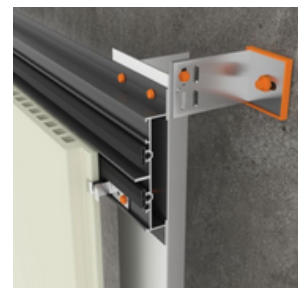
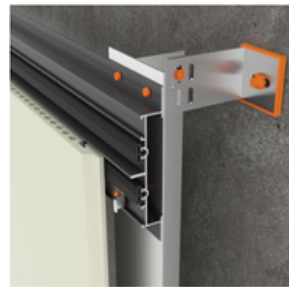
## FTS506 GR



Hidden fixing system consisting of retention and support brackets with horizontal battens that allow the installation of Faveker® pieces with staggered joints. Vertical profiles are attached to the brackets, and horizontal profiles are then installed on top. The tolerance adjustment between the Faveker® ceramic and the horizontal profile is achieved using a polyurethane resin polymeric sealant. Compatible with GA20.

## FTS505

Hidden fixing system dedicated to the installation of vertically oriented pieces. It consists of a combination of vertical and horizontal profiles on which specially designed clips for Faveker® pieces are placed. The versatility of this system allows its use even for designs with staggered vertical joints. It includes an EPDM profile to protect the horizontal joint against water ingress and to reduce vibrations caused by impacts and wind. Compatible with GA16, GA20, and GA30.



# INSTALLATION



[Watch GA16 horizontal installation](#)



[Watch GA20 horizontal installation](#)



[Watch GA20 vertical installation](#)



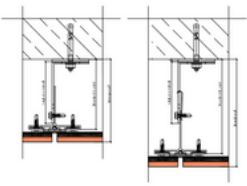
[GA16  
installation manual](#)



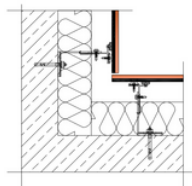
[GA20  
installation manual](#)

# CONSTRUCTION DETAILS

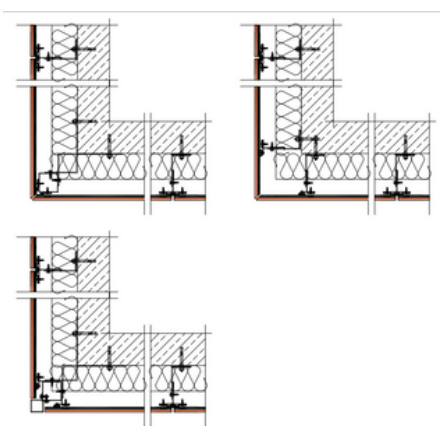
## WALL SEPARATION



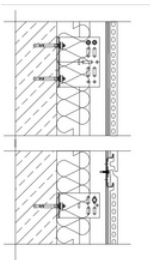
## INTERNAL CORNER



## EXTERNAL CORNER

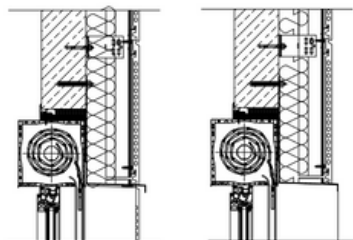


## VERTICAL SECTION



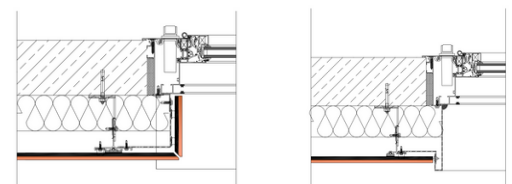
## LINTEL SECTION

Ceramic side option    Aluminum side option

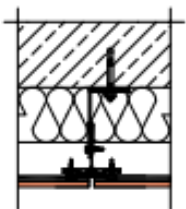


## JAMB SECTION

Ceramic option    Lacquered aluminum option

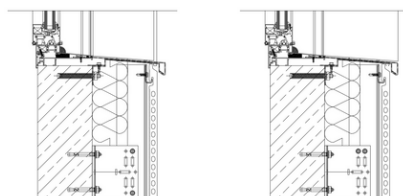


## HORIZONTAL SECTION

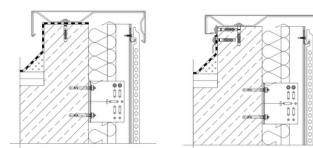


## SILL SECTION

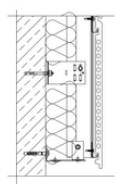
Ceramic side option    Aluminum side option



## UPPER FINISH



## LOWER FINISH



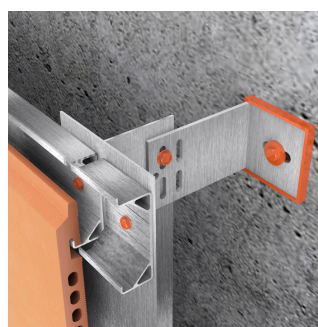
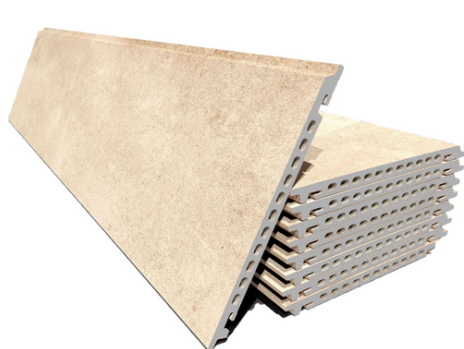


# GA16

# SPECIFICATION

Ventilated ceramic façade FAVEKER® type, made up of accurate cladding tiles GA16, with 18mm thickness. Extrusion produced, with a 26% minimum recycled content and up to 52%, 100% recyclable at the end of its life span, with porcelain characteristics and with <0,5% water absorption according to UNE EN 14411 norm, Ala group. Alveolar internal structure, and 200, 250, 300 and 400 mm height and 600, 800, 1000 and 1200 mm. length. Finish to be decided by the Construction Management of the works, with Bioklinker® possibility with bactericidal and anti-fungal characteristics. With horizontal overlap joint to protect the chamber from water entry. Substructure\* support made up of brackets for holding aluminum vertical profiles and horizontal profiles fixed with screws and anchoring, with a final weight of 31,7kg/m<sup>2</sup>.

- 
- Quality management system, ETA\_16-0645\_2019-09-04\_es (\*including specifications of substructure).
  - Breaking load >3.200N, UNE EN ISO 10545-4.
  - Thermal shock resistance, UNE EN ISO 10545-9.
  - Crazing resistance, UNE EN ISO 10545-11.
  - Frost resistance, UNE EN ISO 10545-12.
  - Chemical resistance, class GHA, UNE EN ISO 10545-13.
  - Stain resistance, UNE EN ISO 10545-14.
  - Reaction to fire A1.

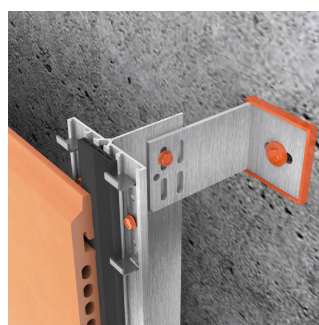
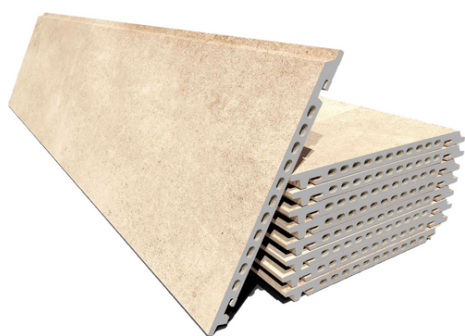


# GA16

# SPECIFICATION

Ventilated ceramic façade FAVEKER® type, made up of accurate cladding tiles GA16, with 18mm thickness. Extrusion produced, with a 26% minimum recycled content and up to 52%, 100% recyclable at the end of its life span, with porcelain characteristics and with <0,5% water absorption according to UNE EN 14411 norm, Ala group. Alveolar internal structure, and 250, 300, 350, 400 and 500 mm height and 600, 800, 1000 and 1200 mm. length. Finish to be decided by the Construction Management of the works, with Bioklinker® possibility with bactericidal and anti-fungal characteristics. With horizontal overlap joint to protect the chamber from water entry. Substructure\* support made up of hidden clips without machining and brackets for holding aluminum vertical profiles with screws, with a final weight of 31,7kg/m<sup>2</sup>.

- 
- Quality management system, [ETA\\_16-0645\\_2019-09-04\\_es](#) (\*including specifications of substructure).
  - Breaking load >3.200N, UNE EN ISO 10545-4.
  - Thermal shock resistance, UNE EN ISO 10545-9.
  - Craze resistance, UNE EN ISO 10545-11.
  - Frost resistance, UNE EN ISO 10545-12.
  - Chemical resistance, class GHA, UNE EN ISO 10545-13.
  - Stain resistance, UNE EN ISO 10545-14.
  - Reaction to fire B-s1,d0.

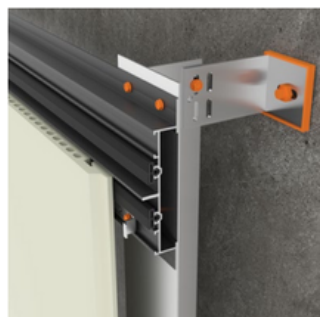
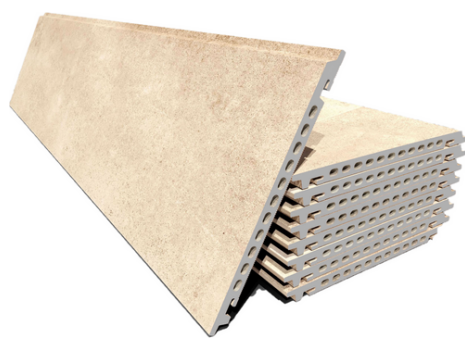


# GA16

# SPECIFICATION

Exterior ventilated façade panel of the FAVEKER® type, made of precision ceramic piece, model GA16, with a thickness of 18 mm. Manufactured by extrusion with a minimum recycled content of 26% and up to 52%, 100% recyclable at the end of its life cycle, with porcelain characteristics and water absorption <0.5% according to UNE EN 14411 standard, group A1a. Internal alveolar structure, available in heights of 200, 250, 300, 400, 500, and 600 mm and lengths of 800, 1000, 1200, 1500, and 1800 mm. Finish to be defined by the Technical Department, with the option of Bioklinker® treatment providing bactericidal and fungicidal properties. Vertical overlapping between pieces ensures protection against water ingress into the cavity. Supporting substructure consists of hidden clips without machining and brackets for retention of vertical and horizontal aluminum profiles fastened with screws, resulting in a weight of 31.7 Kg/m<sup>2</sup>.

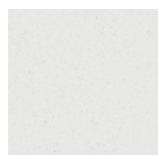
- Carga de rotura >3.200N, UNE EN ISO 10545-4.
- Resistente al choque térmico, UNE EN ISO 10545-9.
- Resistente al cuarteo, UNE EN ISO 10545-11.
- Resistente a la helada, UNE EN ISO 10545-12.
- Resistente a ácidos y bases, clase GHA, UNE EN ISO 10545-13.
- Resistente a las manchas, UNE EN ISO 10545-14.
- Reacción al fuego B-s1,d0.



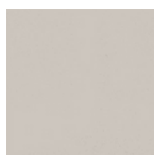


# Colors

## Terracota



Blanco



Beige



Salmón



Rojo



Marrón



Gris



Negro

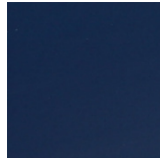
## Glazed



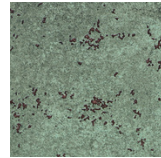
Blanco brillo



Metalizado



Acero



Marengo

## Nature



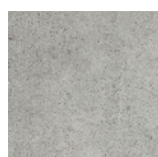
Marble  
carrara



Marble  
travertino



Urban  
blanco



Urban  
gris



Urban  
beige



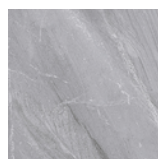
Urban  
grafito



Urban  
caoba



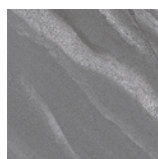
Tibet  
blanco



Tibet  
gris



Tibet  
beige



Tibet  
antracita



Rodeno  
Nogal



Rodeno  
Haya



Rodeno  
Roble



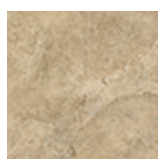
Ordesa  
beige



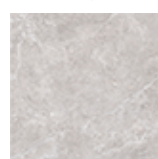
Ordesa  
marrón



Ordesa  
natural



Petra  
Ocre



Petra  
Gris

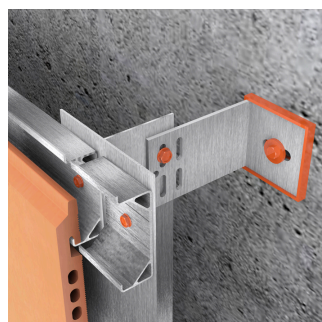


Petra  
Beige

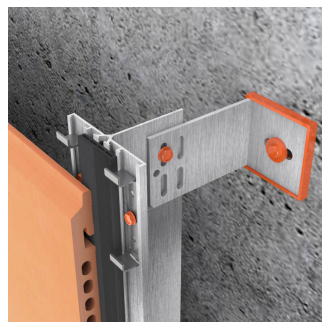
## Formats

Length up to 1800 mm  
Heights: 200, 250, 300,  
350, 400, 500 mm  
Thickness: 18 mm  
Weight: 31.7 Kg/m<sup>2</sup>

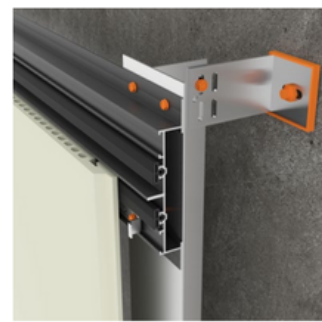
## Compatible systems



**FTS502 A**



**FTS502 B**

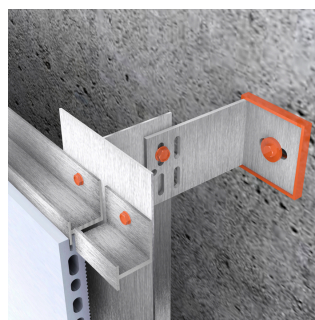
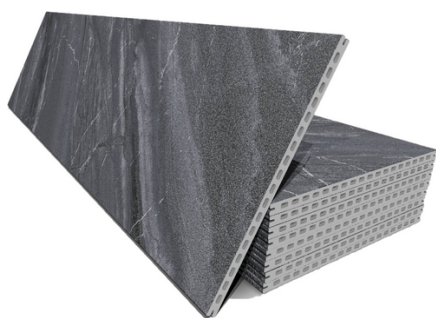


**FTS505**

# GA20 SPECIFICATION

Exterior ventilated façade panel of the FAVEKER® type, made of precision ceramic piece, model GA20, rectified on all four sides, with a thickness of 20 mm. Manufactured by extrusion with a minimum recycled content of 26% and up to 52%, 100% recyclable at the end of its life cycle, featuring porcelain characteristics and water absorption <0.5% according to UNE EN 14411 standard, group Ala. Internal alveolar structure, available in heights of 300, 400, 500, and 600 mm and lengths of 600, 800, 1000, 1200, 1500, and 1800 mm. Finish to be defined by the Technical Department, with the option of Bioklinker® treatment providing bactericidal and fungicidal properties. Supporting substructure composed of brackets for the retention of vertical profiles and continuous horizontal aluminum profiles fastened with screws and anchors, resulting in a weight of 34.4 Kg/m<sup>2</sup>.

- 
- Quality management system, [eta\\_16\\_0645\\_06.09.2022\\_es](#) (\*including substructure specifications).
  - Breaking load >3,000 N, UNE EN ISO 10545-4.
  - Thermal shock resistant, UNE EN ISO 10545-9.
  - Craze resistant, UNE EN ISO 10545-11.
  - Frost resistant, UNE EN ISO 10545-12.
  - Resistant to acids and alkalis, class GHA, UNE EN ISO 10545-13.
  - Stain resistant, UNE EN ISO 10545-14.
  - Fire reaction classification A1.

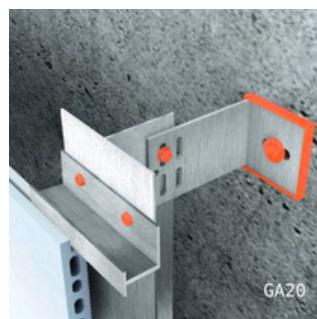
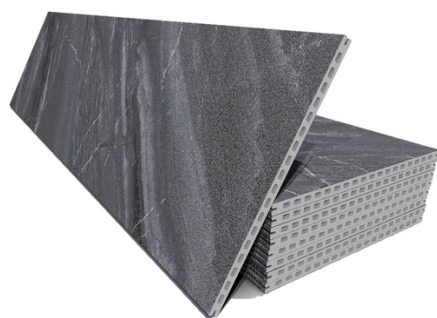


# GA20

# SPECIFICATION

Exterior ventilated façade panel of the FAVEKER® type, composed of precision ceramic pieces, model GA20, rectified on all four sides, with a thickness of 20 mm. Manufactured by extrusion with a recycled content ranging from 26% to 52%, and fully recyclable at the end of its service life. It features porcelain characteristics with water absorption below 0.5% according to UNE EN 14411 standard, group A1a. The panel has an internal alveolar structure and is available in heights of 300, 400, 500, and 600 mm, and lengths of 600, 800, 1000, 1200, 1500, and 1800 mm. Finish is to be defined by the Technical Department, with an option for Bioklinker® treatment, which provides bactericidal and fungicidal properties. The supporting substructure consists of brackets retaining vertical profiles and discontinuous horizontal aluminum profiles secured with screws and anchors, resulting in a weight of 34.4 Kg/m<sup>2</sup>.

- 
- Quality management system, eta 16\_0645\_06.09.2022\_es (\*including substructure specifications).
  - Breaking load >3,000 N, UNE EN ISO 10545-4.
  - Thermal shock resistant, UNE EN ISO 10545-9.
  - Cracking resistant, UNE EN ISO 10545-11.
  - Frost resistant, UNE EN ISO 10545-12.
  - Resistant to acids and alkalis, class GHA, UNE EN ISO 10545-13.
  - Stain resistant, UNE EN ISO 10545-14.
  - Fire reaction classification A1.



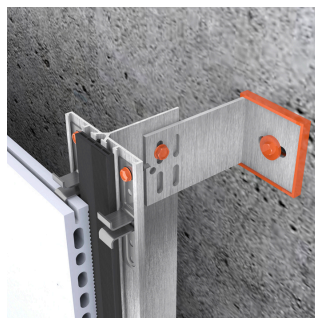
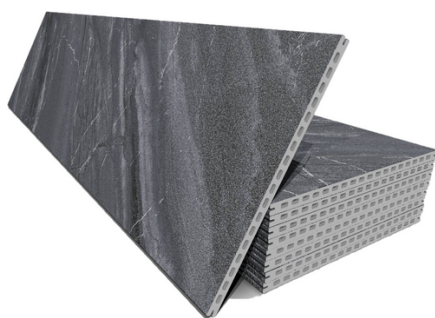


# GA20

# SPECIFICATION

Exterior ventilated façade panel of the FAVEKER® type, made of precision ceramic pieces, model GA20, rectified on all four sides, with a thickness of 20 mm. Manufactured by extrusion with a recycled content ranging from 26% up to 52%, and 100% recyclable at the end of its life cycle. It features porcelain characteristics with water absorption below 0.5% according to UNE EN 14411 standard, group A1a. The panel has an internal alveolar structure and is available in heights of 300, 400, 500, and 600 mm, and lengths of 600, 800, 1000, 1200, 1500, and 1800 mm. Finish to be defined by the Technical Department, with the option of Bioklinker® treatment that provides bactericidal and fungicidal properties. Supporting substructure consists of hidden clips without machining and brackets for retaining vertical aluminum profiles fastened with screws, resulting in a weight of 34.4 Kg/m<sup>2</sup>.

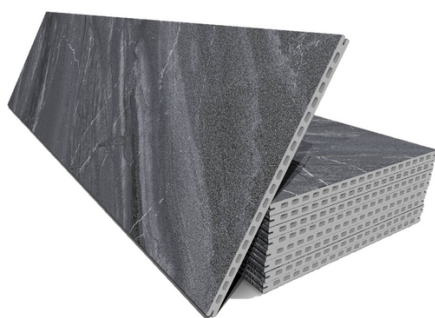
- 
- Quality management system, [eta\\_16\\_0645\\_06.09.2022\\_es](#) (\*including substructure specifications).
  - Breaking load >3,000 N, UNE EN ISO 10545-4.
  - Thermal shock resistant, UNE EN ISO 10545-9.
  - Craze resistant, UNE EN ISO 10545-11.
  - Frost resistant, UNE EN ISO 10545-12.
  - Resistant to acids and alkalis, class GHA, UNE EN ISO 10545-13.
  - Stain resistant, UNE EN ISO 10545-14.
  - Fire reaction classification B-s1,d0.



# GA20 SPECIFICATION

Exterior ventilated façade panel of the FAVEKER® type, made of precision ceramic pieces, model GA20, rectified on all four sides, with a thickness of 20 mm. Manufactured by extrusion with a recycled content ranging from 26% up to 52%, and 100% recyclable at the end of its life cycle. It features porcelain characteristics with water absorption below 0.5% according to UNE EN 14411 standard, group A1a. The panel has an internal alveolar structure and is available in heights of 300, 400, 500, and 600 mm, and lengths of 600, 800, 1000, 1200, 1500, and 1800 mm. Finish to be defined by the Technical Department, with the option of Bioklinker® treatment providing bactericidal and fungicidal properties. Supporting substructure consists of hidden clips without machining and brackets for retaining vertical aluminum profiles fastened with screws, resulting in a weight of 34.4 Kg/m<sup>2</sup>.

- 
- Quality management system, eta\_16\_0645\_06.09.2022\_es (\*including substructure specifications).
  - Breaking load >3,000 N, UNE EN ISO 10545-4.
  - Thermal shock resistant, UNE EN ISO 10545-9.
  - Cracking resistant, UNE EN ISO 10545-11.
  - Frost resistant, UNE EN ISO 10545-12.
  - Resistant to acids and alkalis, class GHA, UNE EN ISO 10545-13.
  - Stain resistant, UNE EN ISO 10545-14.
  - Fire reaction classification B-s1,d0.

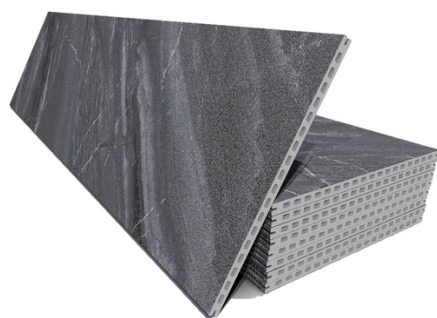


# GA20

# SPECIFICATION

Exterior ventilated façade panel of the FAVEKER® type, made of precision ceramic pieces, model GA20, rectified on all four sides, with a thickness of 20 mm. Manufactured by extrusion with a recycled content ranging from 26% up to 52%, and 100% recyclable at the end of its service life. It features porcelain characteristics with water absorption below 0.5% according to UNE EN 14411 standard, group A1a. The panel has an internal alveolar structure and is available in heights of 300, 400, 500, and 600 mm, and lengths of 600, 800, 1000, 1200, 1500, and 1800 mm. Finish to be defined by the Technical Department, with the option of Bioklinker® treatment providing bactericidal and fungicidal properties. Supporting substructure consists of hidden clips without machining and brackets for retaining vertical and horizontal aluminum profiles fastened with screws, resulting in a weight of 34.4 Kg/m<sup>2</sup>.

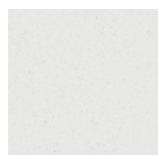
- 
- Breaking load >3,000 N, UNE EN ISO 10545-4.
  - Thermal shock resistant, UNE EN ISO 10545-9.
  - Craze resistant, UNE EN ISO 10545-11.
  - Frost resistant, UNE EN ISO 10545-12.
  - Resistant to acids and alkalis, class GHA, UNE EN ISO 10545-13.
  - Stain resistant, UNE EN ISO 10545-14.
  - Fire reaction classification B-s1,d0.



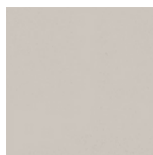


# Colors

## Terracotta



Blanco



Beige



Salmon



Rojo



Marrón



Gris



Negro

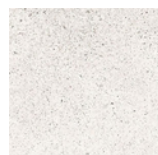
## Nature



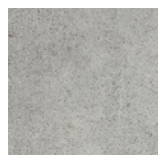
Marble  
carrara



Marble  
travertino



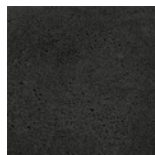
Urban  
blanco



Urban  
gris



Urban  
beige



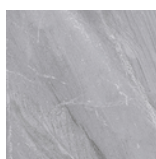
Urban  
grafito



Urban  
caoba



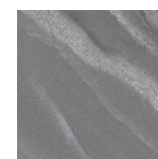
Tibet  
blanco



Tibet  
gris



Tibet  
beige



Tibet  
antracita



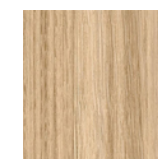
Rodeno  
nogal



Rodeno  
Haya



Rodeno  
Roble



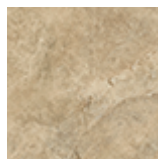
Ordesa  
beige



Ordesa  
marrón



Ordesa  
natural



Petra  
pcre



Petra  
gris



Petra  
beige

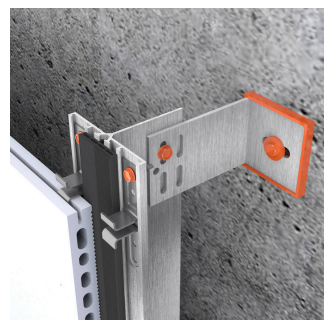
## Formats

Length up to 1800 mm

Heights: 300, 400, 500, 600 mm

Thickness: 20 mm

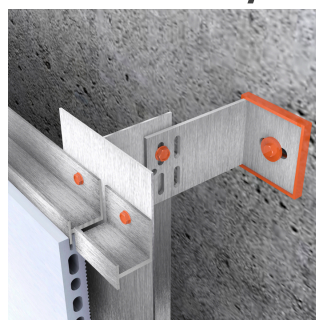
Weight: 34.4 Kg/m<sup>2</sup>



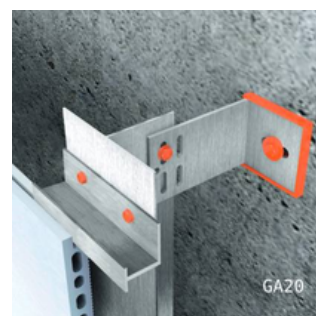
**FTS502 B**



**FTS502 B  
VERTICAL**



**FTS506**



**FTS506GR**



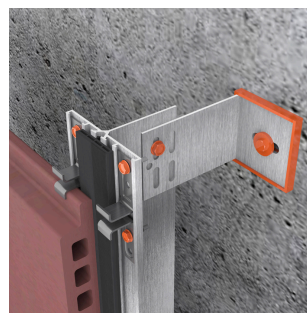
**FTS505**

## Compatible systems

# GA30 SPECIFICATION

Exterior ventilated façade panel of the FAVEKER® type, made of precision ceramic pieces, model GA30, with a thickness of 30 mm. Manufactured by extrusion with a recycled content ranging from 26% up to 52%, and 100% recyclable at the end of its service life. It features porcelain characteristics with water absorption below 0.5% according to UNE EN 14411 standard, group A1a. The panel has an internal alveolar structure and is available in heights of 250, 300, and 400 mm, and lengths of 600, 800, 1000, and 1200 mm. Finish to be defined by the Technical Department, with the option of Bioklinker® treatment providing bactericidal and fungicidal properties. Horizontal overlapping between pieces ensures protection against water ingress into the cavity. Supporting substructure consists of hidden clips without machining and brackets for retaining vertical aluminum profiles fastened with screws, resulting in a weight of 45.0 Kg/m<sup>2</sup>.

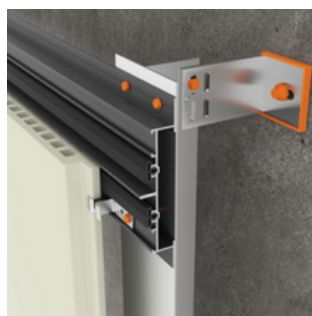
- \*Quality management system, [eta\\_16\\_0645\\_06.09.2022\\_es](#) (including substructure specifications).
- Breaking load >3,000 N, UNE EN ISO 10545-4
- Thermal shock resistant, UNE EN ISO 10545-9
- Craze resistant, UNE EN ISO 10545-11
- Frost resistant, UNE EN ISO 10545-12
- Resistant to acids and alkalis, class GHA, UNE EN ISO 10545-13
- Stain resistant, UNE EN ISO 10545-14
- Fire reaction classification B-s1,d0



# GA30 SPECIFICATION

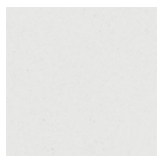
Exterior ventilated façade panel of the FAVEKER® type, made of precision ceramic pieces, model GA30, with a thickness of 30 mm. Manufactured by extrusion with a recycled content ranging from 26% up to 52%, and 100% recyclable at the end of its service life. It features porcelain characteristics with water absorption less than 0.5% according to UNE EN 14411 standard, group Ala. The panel has an internal alveolar structure and is available in heights of 250, 300, and 400 mm, and lengths of 600, 800, 1000, and 1200 mm. Finish to be defined by the Technical Department, with the option of Bioklinker® treatment providing bactericidal and fungicidal properties. Horizontal overlapping between pieces ensures protection against water ingress into the cavity. Supporting substructure composed of hidden clips without machining and brackets for retaining vertical and horizontal aluminum profiles fastened with screws, resulting in a weight of 45.0 Kg/m<sup>2</sup>.

- Breaking load >3,000N, UNE EN ISO 10545-4
- Thermal shock resistant, UNE EN ISO 10545-9
- Scratch resistant, UNE EN ISO 10545-11
- Frost resistant, UNE EN ISO 10545-12
- Acid and alkali resistant, class GHA, UNE EN ISO 10545-13
- Stain resistant, UNE EN ISO 10545-14
- Fire reaction classification B-s1,d0.

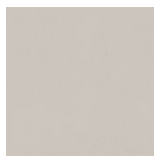


# Colors

## Terracotta



Blanco



Beige



Salmón



Rojo



Marrón



Gris

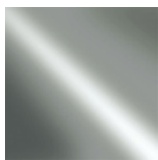


Negro

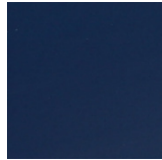
## Glazed



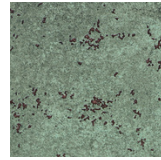
Blanco brillo



Metalizado



Acero



Verde  
Oxido

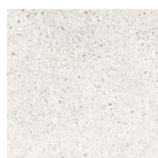
## Nature



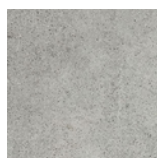
Marble  
carrara



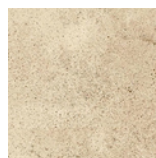
Marble  
travertino



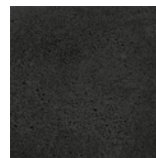
Urban  
blanco



Urban  
gris



Urban  
beige



Urban  
grafito



Urban  
caoba



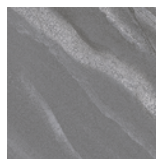
Tibet  
blanco



Tibet  
gris



Tibet  
beige



Tibet  
antracita



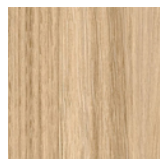
Rodeno  
Nogal



Rodeno  
Haya



Rodeno  
Roble



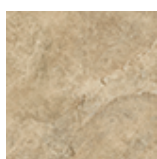
Ordesa  
beige



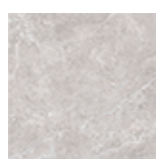
Ordesa  
marrón



Ordesa  
natural



Petra  
Ocre



Petra  
Gris



Petra  
Beige

## Formats

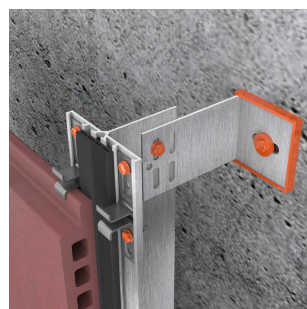
Length up to 1800 mm

Heights: 250, 300, 400 mm

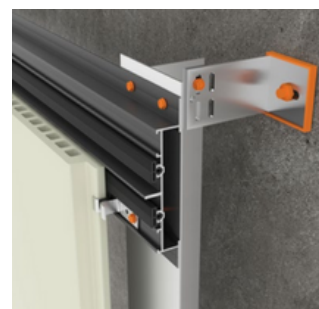
Thickness: 30 mm

Weight: 45 Kg/m<sup>2</sup>

## Compatible systems



**FTS502 B**

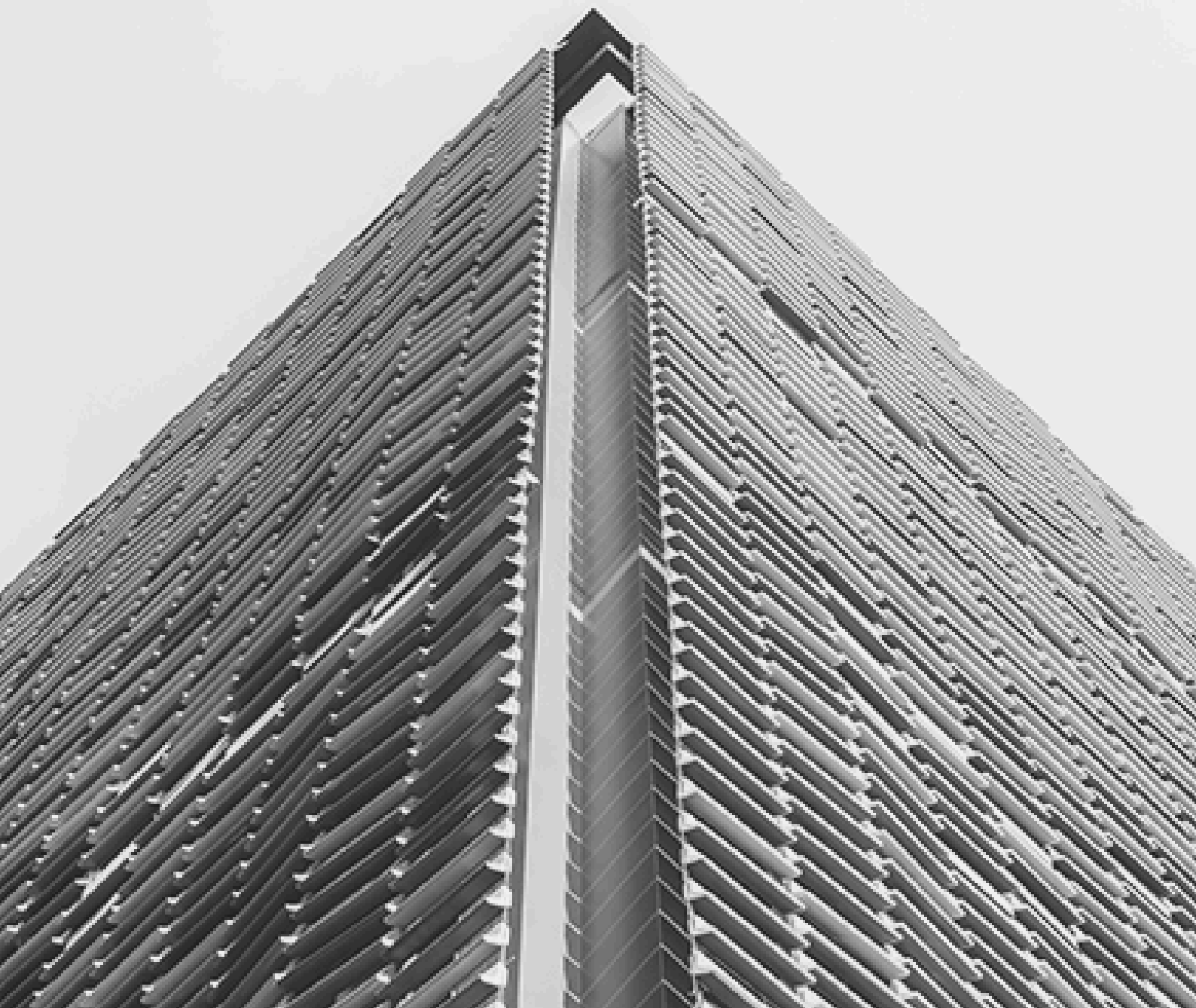


**FTS505**



**more information at**  
**WWW.FAVEKER.COM**

---



**F A V E K E R<sup>®</sup>**  
ARCHITECTURAL CERAMICS

Polígono Industrial El Regatillo, 2,  
44550 Alcorisa, Teruel  
Tel: +34 978 830 511  
Mail: [faveker@gresaragon.com](mailto:faveker@gresaragon.com)